



Buckinghamshire County Council
Select Committee
Health and Adult Social Care

Minutes

HEALTH AND ADULT SOCIAL CARE SELECT COMMITTEE

Minutes from the meeting held on Tuesday 28 March 2017, in Large Dining Room, Judges Lodgings, Aylesbury, commencing at 10.00 am and concluding at 12.13 pm.

This meeting was webcast. To review the detailed discussions that took place, please see the webcast which can be found at <http://www.buckscc.public-i.tv/>
The webcasts are retained on this website for 6 months. Recordings of any previous meetings beyond this can be requested (contact: democracy@buckscc.gov.uk)

MEMBERS PRESENT

Buckinghamshire County Council

Mr B Roberts (In the Chair)

Mr R Reed, Mr B Adams, Mr C Adams, Mr N Brown, Mrs A Davies and Julia Wassell

District Councils

Ms T Jervis	Healthwatch Bucks
Mr A Green	Wycombe District Council
Ms S Jenkins	Aylesbury Vale District Council
Mr N Shepherd	Chiltern District Council
Dr W Matthews	South Bucks District Council

Others in Attendance

Mrs E Wheaton, Committee and Governance Adviser
Ms R Bennett, Committee Assistant
Ms J Bowie, Director Of Joint Commissioning
Ms R Cairns, Public Health Practitioner

1 APOLOGIES FOR ABSENCE / CHANGES IN MEMBERSHIP

Apologies received from Mr Carl Etholen

2 DECLARATIONS OF INTEREST

Ms T Jervis declared an interest in the Better Care Fund item as Healthwatch Bucks are involved in some of the projects.



South Bucks
District Council



3 MINUTES

Members wanted it noted following the special meeting on 21 February that during the Community Hubs pilot beds would be closed for overnight admissions and not permanent closure as reported in the press.

The minutes of the meetings held on 24 January 2017 and 21 February 2017 were agreed as a correct record.

4 PUBLIC QUESTIONS

No public questions had been received.

Julia Wassell handed in a letter from a resident regarding pain management. Letter was passed to Mrs Wheaton to pass on to the correct department.

Action: Committee & Governance Adviser to forward letter to relevant health organisation

5 PETITION

The members of the committee noted the response to the petition received from Ozma Hasif in relation to Community Hospitals.

The evaluation of the pilot scheme is due to be discussed by the Committee in September.

6 CHAIRMAN'S UPDATE

As this meeting was the last one before the Elections in May, the Chairman thanked the Members for their hard work and involvement in the various inquiries. He asked Committee Members to reflect on the work over the past few years and feedback any learning points and work that they felt had been of great benefit.

The following points were highlighted

- The value of getting out to visit those that deliver the services
- GP inquiry and seeing the recommendations implemented and have an impact
- The importance of continuity in Membership
- Inquiry focus groups had worked well
- The idea of sub committees being used to feed information into scrutiny inquiries
- More systematic follow up to inquiries to see if actions have been implemented and are successful
- To evaluate the relationship between BCC and Healthwatch and maximise the opportunities.

7 COMMITTEE UPDATE

Julia Wassell updated the committee that following a meeting with the Clinical Care Commissioning lead on GP commissioning, £20k had been awarded towards the refurbishment of Linton House surgery and an active campaign to have a new health centre in East Wycombe as part of the infrastructure funding and development.

Ms T Jervis from Healthwatch provided a presentation on some of the highlights that Healthwatch has been involved in and their planned areas of work for the rest of the year.

Following discussions with the Committee. Ms Jervis confirmed:

- That although Healthwatch were funded by the County Council they were still

- independent
- That individual surgery reports were not available on the website but there has been feedback directly to them to see how they have taken forward any recommendations
- They continue to recruit volunteers through various means

Ms Jervis was thanked for her update.

8 MUSCULOSKELETAL SERVICES

Dr Christine Campling, CCG Clinical Director, Mr Neil Flint, Head of Commissioning for Planned Care and Ms Charlotte Moss, BHT Clinical Lead for MSK attended the meeting and gave a presentation to update Committee Members on the clinical integration of Musculoskeletal Services.

The Committee discussed the following areas:

- The timings of the implementation of the new service. This is anticipated to be the second quarter of this year but can't be confirmed at the moment
- Factors that contribute to the workload of the service
- The pathways of care and the need for this to remain seamless
- The need for consultation and engagement to be cross county
- Other areas that could benefit from integrated service for example psychology
- The publicity required to highlight the launch of the new service
- The barriers that need to be removed e.g. access for older people and ethnic communities
- The Governance of the new service and where for example complaints would be handled. It was confirmed that the details of the governance were still being worked on, however Bucks Healthcare Trust will have overall governance over the other providers.

9 COMMITTEE WORK PROGRAMME

The Committee discussed ideas for the work programme and possible topics for future inquiries

Areas to consider included:

- Contract Management
- Sustainability and Transformation Plans
- Dementia
- Diabetes and links to obesity
- Performance Reports

The Committee requested that District Members of the Committee were included in any induction material used for new County Councillors.

Action Mrs Wheaton

10 BETTER CARE FUND 2017-19

Ms Jane Bowie, Director of Joint Commissioning and Ms Rajni Cairns, Programme Manager Integrated Care attended the meeting to update Committee Members on the progress of the Better Care Fund.

Ms Bowie gave an overview of the programme including areas of success, examples of work completed and next steps.

The Committee discussed the following areas:

- Concerns were raised as part of the Hospital Discharge inquiry about the governance

and decision-making

- In response to a question about who sits on the Transformation Delivery Group, it was confirmed that this Group is made up of health commissioners, CCGs and health providers, including BHT
- Examples of where integration had been successful and learning from them. Ms Bowie confirmed that they were in touch with other Local Authorities and were learning from their experiences
- A Member expressed concern over the lack of performance indicators in the report but Ms Bowie confirmed that this information is available and would be included in future reports. The overall responsibility for the BCF sits with the CCGs.
- The protection of funding in some areas and how the assessments of funding applied have been carried out
- An explanation of acronyms including MAGs (Multi Agency Groups), DFG (Disabled Facilities Grant) and OPAT (Outpatient Services)
- The administration of the programme and it's back offices services and if this was funded from within the BCF
- Discussed the Joint Commissioning team and its membership was confirmed as lead commissioners from Health and Social Care and this will feed into the Health and Wellbeing Board
- Committee Members asked when the delayed transfers of care Better Care Fund performance indicator would be out of the red. Ms Bowie confirmed that an official response on this would be fed back to partners following the Hospital Discharge inquiry but confirmed that work is ongoing about how they can address that particular target. Ms Bowie also stated that Bucks is a better performing area locally but the way in which the targets are set doesn't always highlight this
- It was agreed that Committee Members would be invited to the BCF workshop

Action: Ms Cairns

The Committee thanked Ms Bowie and Ms Cairns for their update.

11 DATE AND TIME OF NEXT MEETING

The next meeting is due to take place on Tuesday 13 June 2017 at 10am.

CHAIRMAN



Healthwatch Bucks - a year - 2016-17

Thalia Jervis - Chief Executive, Healthwatch Bucks

27 March 2016

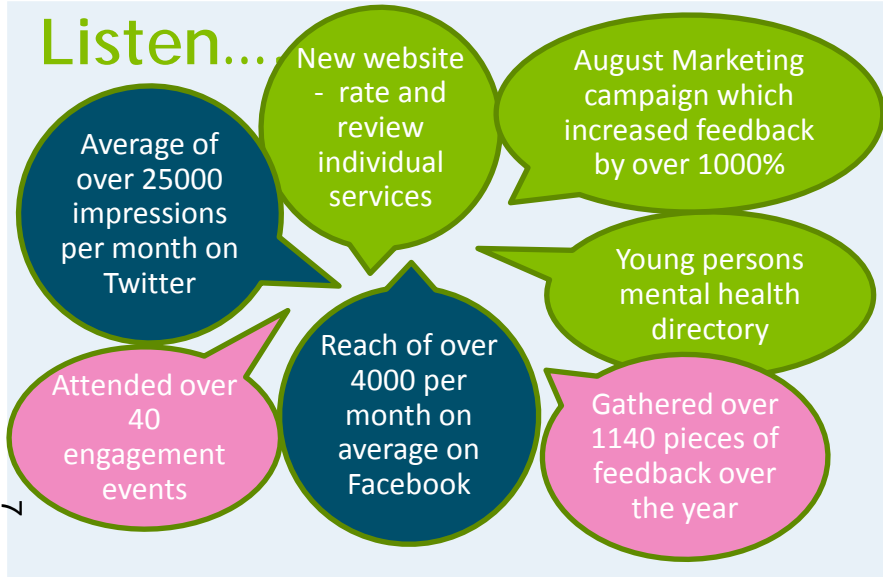
Healthwatch Bucks - a reminder...

- One of 148 independent local healthwatch set up by the government
- Our mission is *to ensure that the collective voice of people using health and social care is acted on...*
 - To **listen** to you, the residents of Buckinghamshire , so we understand what you think about Health and Social Care
 - To **influence** the right people so your views made a difference to health and social care services
 - To **change** the way health and social care services are commissioned and delivered to for the better
- Our core funding is £200,000 (and this supports the equivalent of 4 full time members of staff) and around 25 volunteers
- We are about to enter a tender process with an associated funding reduction proposed

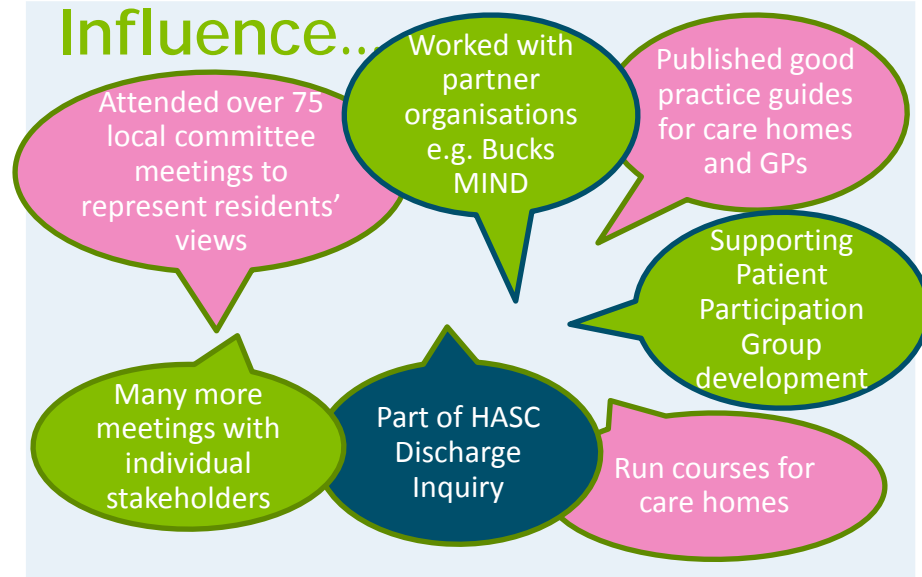


Just some of what we have done.....

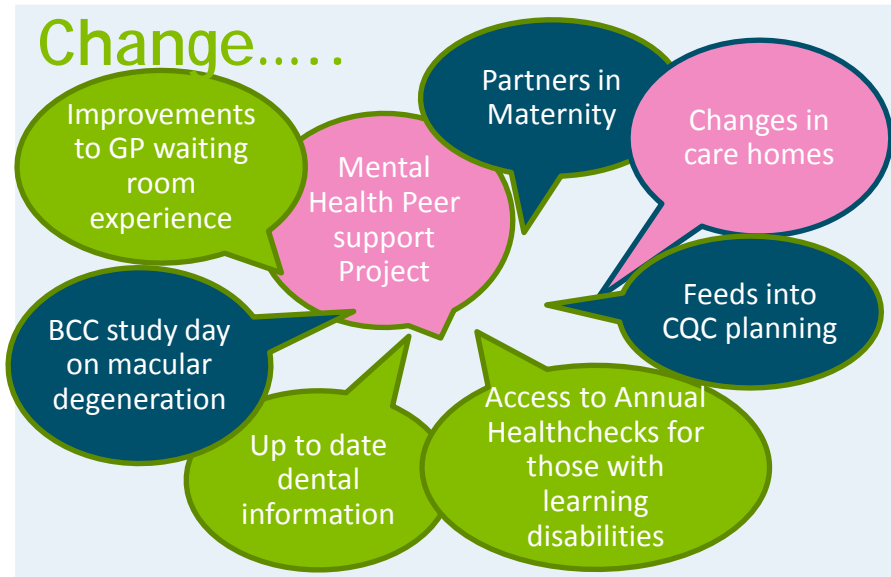
Listen...



Influence...



Change.....



Develop.....



Healthwatch Bucks Strategy 2017-2020

What is Healthwatch Bucks?

Healthwatch Bucks is one of 148 independent local organisations set up by government to ensure that decision-makers and health and social care services put the experiences of people at the heart of their work.

What does Healthwatch Bucks want?

Our vision is that your experiences, ideas and opinions make a positive difference to the way health and social care is provided in Buckinghamshire.

How does Healthwatch Bucks help make that happen?

Our mission is to ensure that the collective voice of people using health and social care services is heard, considered and acted upon.

Our three objectives are:

To **listen** to you, the residents of Buckinghamshire, so we understand what you think about health & social care

You will know who we are and why you should talk to us

- We listen to you to understand what you think about health and social care provision
- We help other organisations engage effectively with you
- We partner with other organisations to understand the views of different groups
- We enable you to feed in your views on changes proposed for health and social care
- We work with others to make sure you know where to go when you need help

To **influence** the right people so your views make a difference to health and social care services

You trust us to represent your views independently and with integrity

- We celebrate success and recognise and share good practice
- We highlight areas for improvement and work with providers to understand how they will deliver improvements
- We attend the right meetings and work with providers in decision making
- We work with other organisations to extend the reach of our influence
- We make sure our influence is felt at a national level through Healthwatch England and the Care Quality Commission

To **change** the way health and social care services are commissioned and delivered for the better

You can see how we have made a positive difference

- We hold people to account in responding to the changes we have recommended
- Our projects, processes and reporting are designed to deliver and demonstrate impact
- We review and report on specific aspects of health and social care to provide detailed recommendations
- We ask for patient and service user representation in all aspects of decision making on health & social care
- We collaborate with others to make change happen

We always ask ourselves.... "what difference does this make for patients and other service users?"

So how does the organisation work:

We will be:

- **Independent** – we are independent of those who buy, design or deliver health and social care services
- **Listening** – we focus on understanding what your views are on health & social care services
- **Active** – we get out and about and make things happen
- **Focussed** – our delivery will be targeted on our priority areas
- **Balanced** – we will work across the health, wellbeing and social care agendas
- **Volunteer based** – Volunteers will be at the heart of Healthwatch Bucks
- **Collaborative** – we will work with other people to extend our reach
- **Sustainable** – we will support our core business with additional income streams
- **Signposting** – helping you work out where you need to go to get the services you need

What are your priorities for 2017-18?

Our priorities are:

- **Mental health and Wellbeing**
- **Prevention and Primary Care**
- **Transition to and within Social Care**

The priorities will guide our focus around key aspects of our activity such as:

- engagement with underrepresented groups;
- engagement with key healthcare developments (e.g. the Sustainability and Transformation plans);
- meeting attendance and stakeholder management; and
- project delivery.